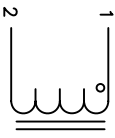
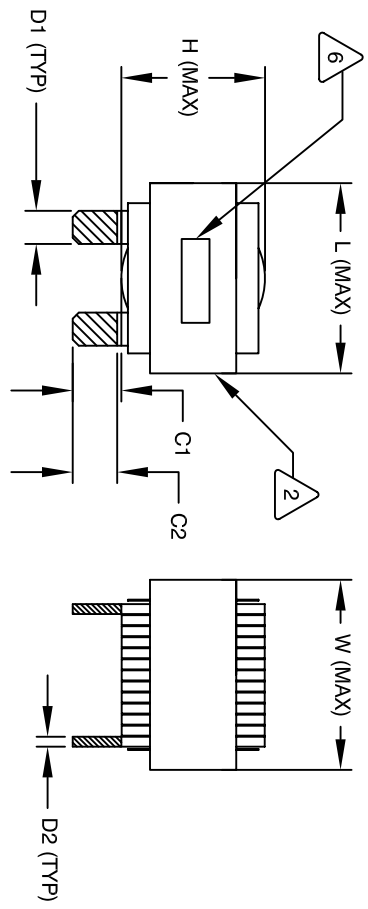


REVISION HISTORY

REV	ECN	DESCRIPTION	BR	DATE	CHK	DATE
A	130806	PRODUCTION RELEASE	RL	2/13/11	JCL	2/13/11
B	130806	SHOW EPOXY AND SILICONE AND CHANGE DIMENSIONS	JK	8/06/13	BO	8/06/13

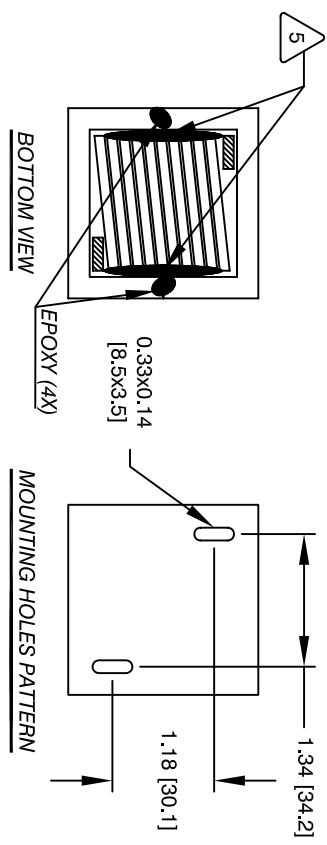


SCHEMATIC



DIMENSIONAL TOLERANCE

	mm	Inch
C1	13.40 ± 1.50	0.52 ± 0.06
C2	10.90 ± 1.00	0.42 ± 0.04
D1	7.60 (TYP)	0.30 (TYP)
D2	2.55 (TYP)	0.10 (TYP)
L	57.0 MAX	2.25 MAX
W	57.0 MAX	2.25 MAX
H	36.0 MAX	1.42 MAX



DC-BIAS L

DC-BIAS	L
0A	14.3 uH
5A	13.8 uH
10A	13.7 uH
15A	13.6 uH
20A	13.4 uH
25A	13.2 uH
30A	13.2 uH
40A	12.7 uH
50A	12.3 uH
60A	11.9 uH
70A	11.5 uH
80A	10.9 uH
90A	10.6 uH
100A	10.2 uH

- BUILT TO ROHS COMPLIANCE
- LABEL PART NUMBER AND REVISION WHERE SHOWN
- VARNISH PART AND CURE
APPLY SILICON WHERE SHOWN
- WRAP TAPE AROUND CORES
WITH CORES AND NOMEX SPACERS
ASSEMBLE PRE FORMED FLAT HELICAL COIL
CONSTRUCTION
- WEIGHT: 405 GRAM (TYP)
RECOMMENDED OPERATING TEMP: -40°C TO 85°C AT 55 °C AMBIENT
HI-POT TEST FOR WINDING TO CORE ISOLATION, 1000VDC @ 2mA, 1 MIN
INTERWINDING CAPACITANCE @ 10KHZ = 20pF (TYP)
|z|@SRF=3.0 KILO-OHM
SRF=9.4 MHZ
RATED CURRENT: 160 AMPS
DCR= 0.98 MILLI-OHM MAX., USING GW INSTEK GOM-801H OR EQUAL
L@DC BIAS: SEE TABLE ON RIGHT.
L= 14uH ± 15%, MEASURED AT 10 KHZ, 0.25V, ZERO DC BIAS
SPECIFICATIONS:

- VARNISH DOLPH or EQUAL
SILICONE DOW CORNING OR EQUAL
NOMEX SPACERS FOR SIDE AND CENTER LEG OF CORES
OUTER WRAP: 3M GLASS OR EQUAL
WIRE: UL RECOGNIZED 200°C RATED MAGNET WIRE
CORE: COMPACTED POWDERED CORE

- INSULATION CLASS 200°C REQUIRED
MATERIAL: UL RECOGNIZED 94V-0 FOR FLAMMABILITY

NOTES: UNLESS OTHERWISE SPECIFIED, READ FROM BOTTOM UP.

QTY	CODE IDENT	MFG. P/N	DESCRIPTION	ITEM NO.
			PARTS LIST	
			www.coilws.com	
			353 W. GROVE AVE	
			ORANGE, CA 92665	
			Coil Winding Specialist, Inc.	
			High Current Helical Inductor	
			14 uH, 160 Amps, Horizontal	
			SIZE Dwg. No.	REV
			B ES55202-140M-160AH	B
			SCALE NOT_TO_SCALE	SHEET 1 OF 1

UNLESS OTHERWISE SPECIFIED
DIMENSIONING AND TOLERANCE PER ANSI Y14.5M
ALL DIMENSIONS ARE IN INCHES
AND [DIMETERS].
TOLERANCE INCHES: ϕ = ±0.30
XXX=±0.10 .XX=±0.20
TOLERANCE METERS: ϕ = ±0.30
XXX=±.254 .XX=±.51
ANGLE PROJECTION ϕ = ±0.30
DO NOT SCALE DRAWING